



35 Hawthorn Lane Bright VIC

3 2 3

Discover more space than meets the eye within this charming two-story A-Frame home, nestled in a tranquil corner location. Positioned opposite the Arboretum and within a leisurely stroll to the Ovens River and town centre, this residence offers both serenity and convenience.

Boasting three bedrooms and two bathrooms, along with a single carport and garage, the property features an established and well maintained garden and a delightful outdoor sitting area on the North side. Whether seeking an ideal investment property, holiday retreat or a comfortable year-round residence, this home presents a perfect blend of style and functionality.

The lower level showcases an open-plan living space with a kitchen boasting ample bench and cupboard space, complemented by a convenient walk-in pantry. The dining

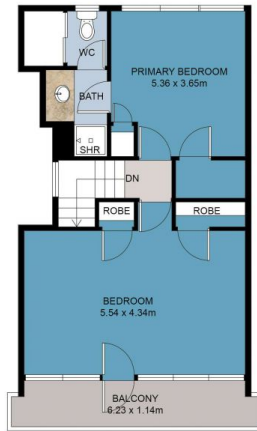
Price : \$849,000
Land Size : 598 sqm
View : <https://www.dickensrealestate.com.au/sale/vic/north-eastern/bright/residential/house/7871590>



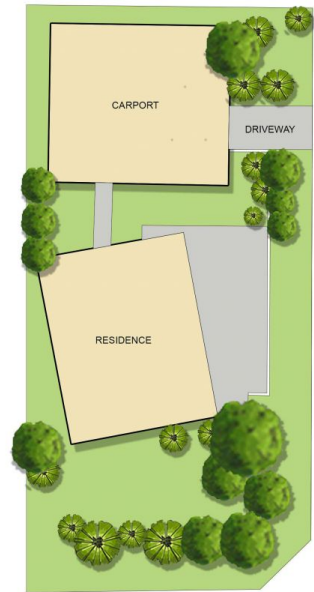
The Sales Team
03 5755 1307



GROUND FLOOR



FIRST FLOOR



SITE PLAN

This floor plan including furniture, fixture measurements and dimensions are approximate and for illustrative purposes only. BoxBrownie.com gives no guarantee, warranty or representation as to the accuracy and layout. All enquiries must be directed to the agent, vendor or party representing this floor plan.

35 Hawthorn lane, Bright