



17 Lumley Drive Bright VIC

3  1  1 

Situated only a stones throw from the Ovens River, Centenary Park and the town centre, 17 Lumley Drive is an incredibly well presented 3 bedroom, 1 bathroom family home set on a large 887m2 parcel of land.

A wonderful opportunity to get yourself into the housing market for everyday living, or why not invest and offer this home up for permanent rental, there certainly is no shortage of demand.

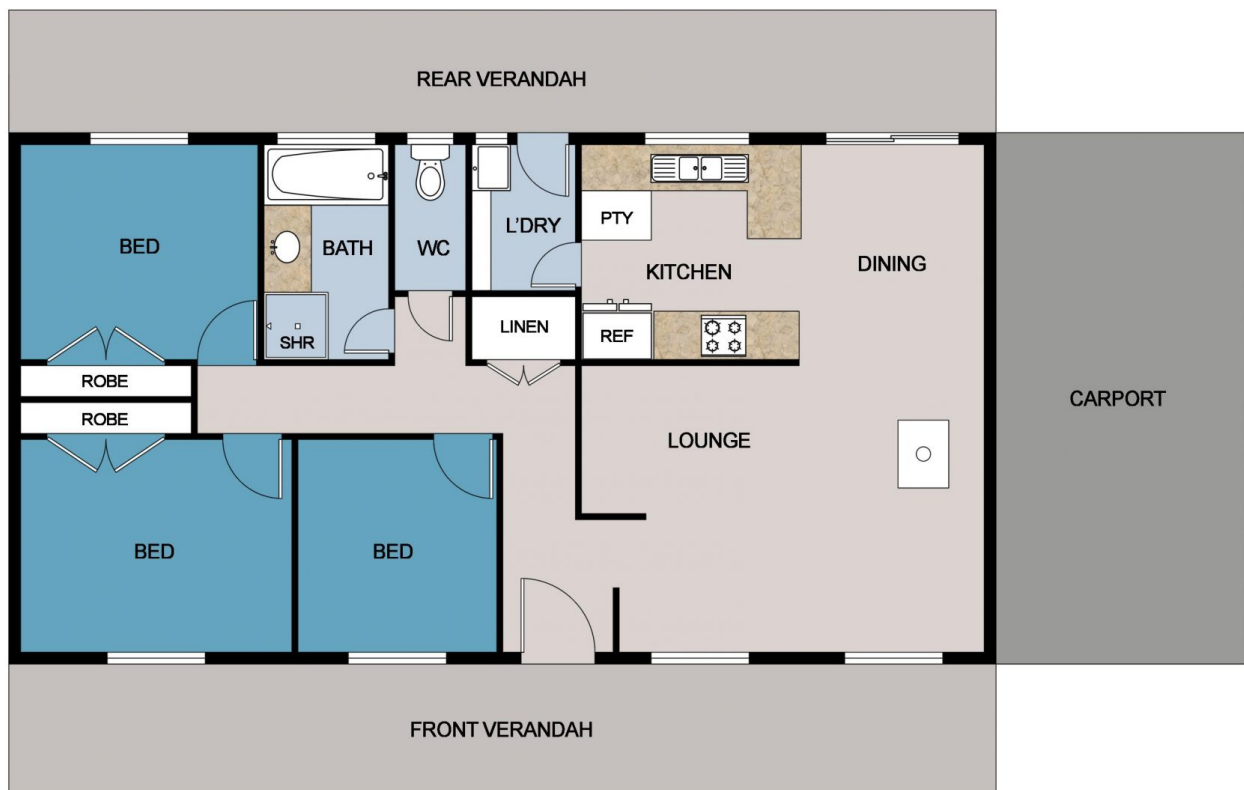
Enter and you feel right at home. Kick off the boots and hang up your hat and you are greeted by a nice size lounge with slow combustion wood fire and reverse cycle split system unit that is sure to keep you comfortable all year round. Open plan kitchen and dining offer plenty of space to cook up a storm and then sit down with the family to enjoy.

Land Size : 852 sqm

View : <https://www.dickensrealestate.com.au/sale/vic/north-eastern/bright/residential/house/7506596>



The Sales Team
03 5755 1307



FLOOR PLAN

This floor plan including furniture, fixture measurements and dimensions are approximate and for illustrative purposes only. BoxBrownie.com gives no guarantee, warranty or representation as to the accuracy and layout. All enquiries must be directed to the agent, vendor or party representing this floor plan.

17 Lumley Drive, Bright