




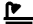

### 6 Wattle Avenue Bright VIC

Offering a very well presented 3 bedroom 2 bathroom home situated within an easy walk to the centre of town and the Ovens River.

On a beautifully laid out corner allotment of some 609m<sup>2</sup>, this home makes for the perfect place to get into our local market, when you are wanting enough to potter around after but not too much that you can't get out and enjoy all that we have to offer.

2 living spaces, with a TV room that is separate to the open plan lounge, dining and kitchen, with the kitchen itself having been upgraded recently with new appliances and lighting and offers plenty of storage as well.

There is a slow combustion wood fire in the lounge to keep you toasty warm over winter, along with a reverse cycle

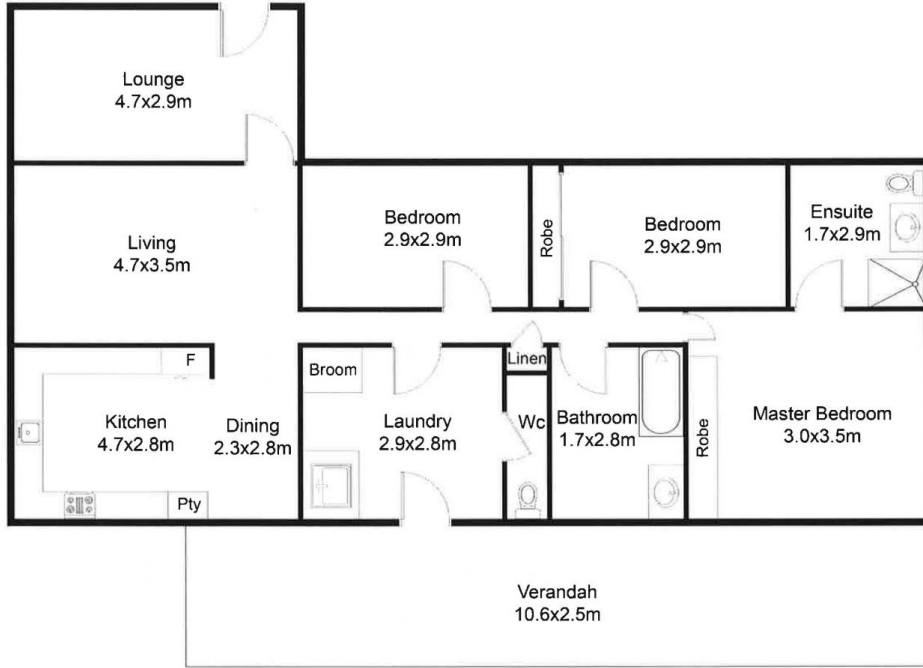
3  2  2 

**Land Size** : 609 sqm

**View** : <https://www.dickensrealestate.com.au/sale/vic/north-eastern/bright/residential/house/5135824>



**The Sales Team**  
**03 5755 1307**



### FLOOR PLAN

This floor plan including furniture, fixture measurements and dimensions are approximate and for illustrative purposes only. Boxbrownie.com gives no guarantee, warranty or representation as to the accuracy and layout. All enquiries must be directed to the agent, vendor or party representing this floor plan.

Wattle Avenue